

# ST. JOSEPH CHURCH

St. Joseph School  
(808) 935-4936



Website  
www.sjshilo.com

Principal

**Michael Paekukui**

**June 21, 2020**

Served by the Blessed Sacrament Congregation

*Church Dedicated in 1919*

**Pastor:**

Rev. Apolinario Ty, SSS  
808-430-0481

**Parochial Vicar**

Rev. Joselito Hitois, S.S.S.  
808-785-5761

**Deacons:**

Dcn. David Watson

43 Kapiolani Street  
Hilo, HI 96720  
(808)  
935-1465  
www.stjoehilo.com

Visit our **FACEBOOK** Page  
**@JosephHilo1465**

*Afternoon streaming of  
Adoration of the Blessed  
Sacrament begins at 4:00 p*

**Announcement/  
Appointments:**

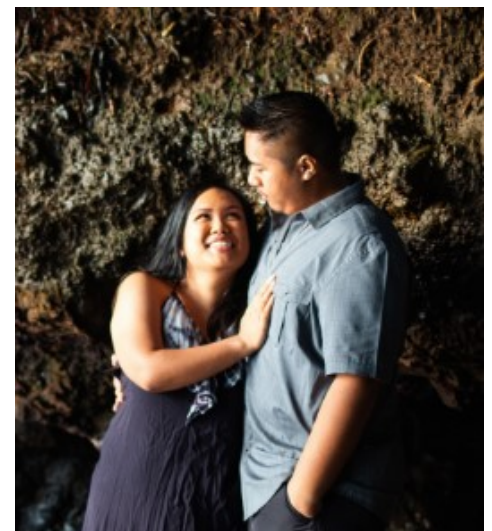
- WEEKDAY MASSES DO NOT NEED RESERVATIONS
- MASKS MUST BE WORN AT ALL TIMES WHILE ON CHURCH PROPERTY
- EVERYONE MUST FOLLOW THE NEW RULES & PROCEDURES OR WE RISK THE CLOSURE OF THE CHURCH
- ALL SACRAMENTS OF INITIATION CLASSES WILL RESUME IN JULY FOR THE 2019-2020 RELIGIOUS ED YEAR via REMOTE & SMALL GROUP GATHERINGS
- THE 2020-2021 RELIGIOUS ED YEAR WILL BE TAKING REGISTRATIONS IN

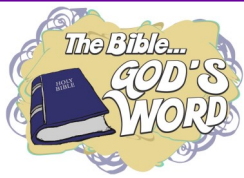


## **Congratulations to Ikaika & Marian Pakele**

*Who were married in our parish on  
Saturday, June 20th!*

*Wishing you a lifetime of happiness  
and blessings.*





Sunday, June 21

Jer 20:10-13  
Ps 69:9-10, 17, 33, 35  
Rom 5:12-15  
Mt 10:26-33

Monday, June 22

2 Kgs 17:5-8 13-15a, 8  
Ps 60:3-5, 12-13  
Mt 7:1-5

Tuesday, June 23

2 Kgs 19:9b-11, 14-21,  
Ps 48:2-4, 10-11  
Mt 7:6, 12-14

Wednesday, June 24

Nativity of St. John the  
Baptist  
Is 49:1-6  
Ps 139:1b-3  
Acts 13:22-26  
Lk 1:57-66, 80

Thursday, June 25

2 Kgs 24:8-17  
Ps 79:1b-5, 8-9  
Mt 7:21-29

Friday, June 26

2 Kgs 25:-12  
Ps 137:1-6  
Mt 8:1-4

Saturday, June 27

Lam 2:2, 10-14, 18-19  
Ps 74:1b-7, 20-21  
Mt 8:5-17

Sunday, June 28

2 Kgs 4:8-11, 14-16a  
Ps 89:2-3, 16-19  
Rom 6:3-4, 8-11  
Mt 10:37-42

**12<sup>th</sup> Sunday of Ordinary Time – June 21**

**Body and Soul**

We hear in our Gospel this Sunday Our Lord Jesus' warning: "Do not be afraid of those who kill the body but cannot kill the soul; rather, be afraid of the one who can destroy both soul and body in Gehenna.

Body and Soul. The body we easily know and recognize when it is deteriorating. But what about the soul? How do we know that our soul is deteriorating and slowly being destroyed?

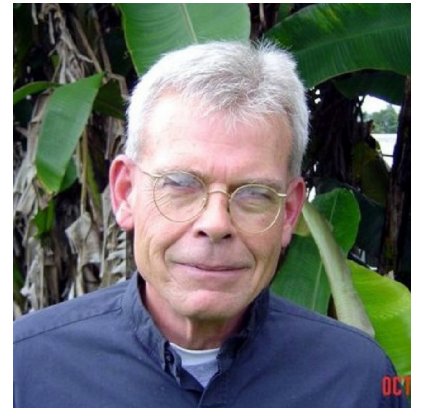
While we might not be able to see it, the reality of the soul is revealed in the way we are living our lives. That is, when we are trying to live our lives to the fullest, which is by being true to how God intends us to be! So we need to nourish our soul by feeding it with food that will keep our focus on God. The Word of God and the Bread of life are the best nourishment we can give to our souls. And likewise, acts of charity and prayer. In the same manner losing one's soul is cutting off the bonds that unites us to God and His will for us. And we can destroy the soul by not nurturing it with the food that can sustain it.

So with what kind of food are we nourishing our soul?

*Fr. Poli*

**Drive-BYE Parade**  
*For Fr. Mike Scully*

Friday, June 26 at 5:30 pm  
Malia Puka o Kalani Church  
Enter at Desha Ave & Exit at Lauae  
Yung Ave



Let's "aloha" Fr. Mike with a farewell card, lots of smiles & shakas. Keep it simple as we show our appreciation and support for all his years in ministry here on the Big Island.



## Stewardship Report of Treasury for:

	Deposited:	YTD Actual	YTD Budget
May 19-May 26	7,156.38	642,364.58	770,374.88
May 27-Jun 3	11,241.31	653,605.89	787,883.25
Jun 4 - Jun 8	14,961.65	682,781.28	848,190.00
Jun 9 - Jun 15	11464.04	702742.29	848,190.00
		Loan to school	241,657.86
		Designated Funds	66,249.94
	Restricted Parish Hall Funds		458,756.23
			<b>766,664.03</b>

### All Weekend Masses Require Reservations

***Monday to Thursday ONLY call the rectory office to make a reservation.***

- 1. DO NOT LEAVE VOICEMAILS. You must speak to a staff member.***
- 2. We will not accept reservations after Thursday.***
- 3. You may come to the Church on the weekend no later than 30 minutes before your mass time and visit the reservations table.***
- 4. If there are seats available they will assign you a seat.***
- 5. Keep in mind there are only two staff members assisting with Reservations and there are other calls (ie Funeral planning, etc); JUST KEEP CALLING.***



## FAMILY CATECHESIS: DISCOVERING JESUS AT THE HEART OF THE HOME

A Three-Part Series for Faith  
Formation Catechists

Diocese of Honolulu, Office of Religious Education

Jayne Ragasa Mondoy, Director and Host

No fee for this event

event contact: Chad Chun (808) 203-6747 cchun@rcchawaii.org



### FACILITATOR: JO ANN PARADISE, D.MIN.

A nationally renowned speaker and educational consultant, Jo Ann will present three lively, interactive sessions aimed to help parishes accompany families to meet the risen Lord and respond to his invitation through catechesis and a life of discipleship.



### READY OR NOT: THE PARADIGM SHIFT TO FAMILY- CENTERED CATECHESIS

THURSDAY, JULY 9, 2020 9:30 - 11 AM



### THE POWER OF RITUAL

THURSDAY, AUGUST 6, 2020 9:30 - 11 AM



### KNOWING & LIVING THE TRUTHS OF OUR FAITH

THURSDAY, SEPTEMBER 3, 2020 9:30 - 11 AM

### REGISTER ONLINE

[www.catholicahawaii.org/familycatechesis](http://www.catholicahawaii.org/familycatechesis)  
(No fee for this event)

#### JOIN US ON ZOOM

Once registered, you will receive an e-mail confirmation with a link/password valid for all three sessions.

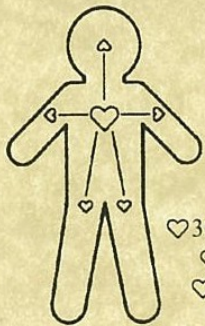
Sessions will be recorded for on-demand viewing at

[www.catholicahawaii.org/ore/webinars](http://www.catholicahawaii.org/ore/webinars)





## Island Pediatrics, Inc.



Joseph A. D'Angelo, M.D.  
General Pediatrics  
Pediatric Cardiology

♥ 305 Wailuku Drive, Unit 2A ♥ Hilo, Hawaii 96720  
♥ Tel: (808) 933-2982 ♥ Fax: (808) 933-2983  
♥ <http://sites.google.com/site/islandpediatricsinc>  
♥ [IslandPediatricsInc@gmail.com](mailto:IslandPediatricsInc@gmail.com)

*Start with your Heart!*

Now Accepting New Patients

## Linden Family Medicine Clinic LLC



Patrick Young, MD  
Gary Duncan, PA-C

Call 808-961-0146 for appointments  
Walk-Ins Welcome  
400 Hualani St. - Suite 196 - Hilo

## WHAT TO EXPECT AND WHAT IS EXPECTED!

### ARRIVING AT MASS...(arrive no later than 10 minutes before Mass or forfeit your reservation)

UPON ARRIVAL, PLEASE SHOW YOUR RESERVATION CONFIRMATION TO THE FRONT DOOR HOSPITALITY TEAM. SOMEONE WILL ASSIST YOU IN LOCATING YOUR SEAT NUMBER. YOU MUST SANITIZE BEFORE ENTERING.

**PLEASE REMAIN IN YOUR SEATS AT ALL TIMES.**

### **MASK TO BE WORN AT ALL TIMES**

Only exceptions: priest-celebrant while he is speaking, and the lectors/cantors while they are reading/singing, and when you receive Holy Communion.

**ALL WHO ATTEND MASS MUST MAINTAIN PROPER PHYSICAL DISTANCING (6 FEET)**

**HAND SANITIZER WILL BE AVAILABLE AT THE ENTRANCE OF THE CHURCH, BUT YOU ARE ASKED TO BRING YOUR OWN AS WELL.**

### DURING MASS...

- THERE WILL BE NO MISSALETTES IN THE PEWS. YOU ARE FREE TO BRING YOUR OWN, BUT YOU MUST TAKE IT HOME WITH YOU.
- COLLECTION BASKETS WILL NOT BE PASSED YOUR OFFERING MAY BE PLACED IN THE DESIGNATED WOODEN OFFERING BOX AT THE FRONT ENTRANCE.
- THERE WILL BE NO OFFERTORY PROCESSION
- HOLDING HANDS DURING THE LORD'S PRAYER IS NOT ALLOWED
- DURING THE SIGN OF PEACE, YOU MAY SMILE, WAVE, BOW OR SHAKA TO YOUR NEIGHBOR (NO PHYSICAL CONTACT).

### RECEIVING HOLY COMMUNION...

- ONLY THE BODY OF CHRIST WILL BE DISTRIBUTED
- USHERS WILL DIRECT YOU WHEN TO COME OUT OF YOUR PEW TO RECEIVE COMMUNION
- PLEASE MAINTAIN A 6 FOOT PHYSICAL DISTANCE FROM THE PERSON IN FRONT OF YOU; FOLLOW THE MARKINGS ON THE FLOOR
- YOU WILL RECEIVE COMMUNION ON THE HANDS ONLY TO PROTECT YOU, THE MINISTER AND THOSE WHO RECEIVE AFTER YOU.
- WHEN YOU COME FORWARD FOR COMMUNION, WEAR YOUR MASK OR FACE COVERING. WHEN RECEIVING: REMOVE YOUR FACE COVERING WHEN THE USHER INSTRUCTS, FLATTEN YOUR HANDS, CONSUME, COVER YOUR FACE AGAIN THEN RETURN TO YOUR SEAT
- PARISHIONERS IN THE DESIGNATED HANDICAPPED SEATS WILL RECEIVE COMMUNION AFTER ASSEMBLY FROM CLERGY

### AFTER MASS...

AT THE CONCLUSION OF MASS, USHERS WILL DISMISS THE ASSEMBLY BY ROWS.

PROCEED DIRECTLY TO YOUR VEHICLE, CONGREGATING ON THE CHURCH LANAI, AND IN THE PARKING LOT WILL NOT BE ALLOWED UNTIL FURTHER NOTICE.

IMMEDIATELY AFTER MASS, THE CHURCH DOORS WILL BE CLOSED TO SANITIZE THE FREQUENTLY TOUCHED AREAS

**THANK YOU FOR YOUR COOPERATION & PATIENCE DURING THIS TIME OF TRANSITION.**

